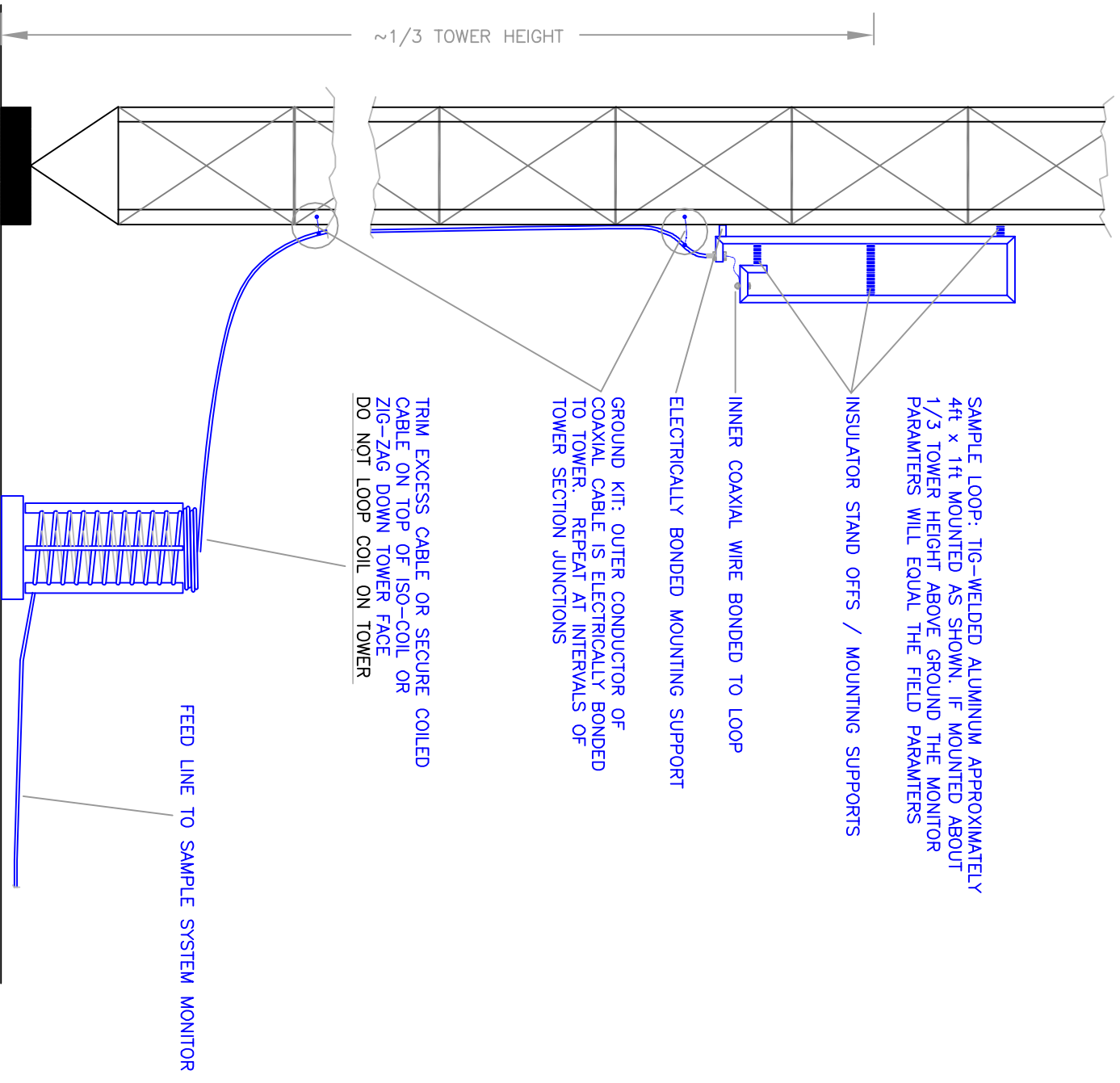


SAMPLE LOOP SHOULD BE MOUNTED AT RIGHT ANGLES TO OPPOSITE TOWER FACE AS SHOWN

TOP VIEW



HATFIELD & DAWSON
CONSULTING ENGINEERS

DRAWING SHOWING
INSTALLATION OF TYPICAL SAMPLE SYSTEM LOOP