

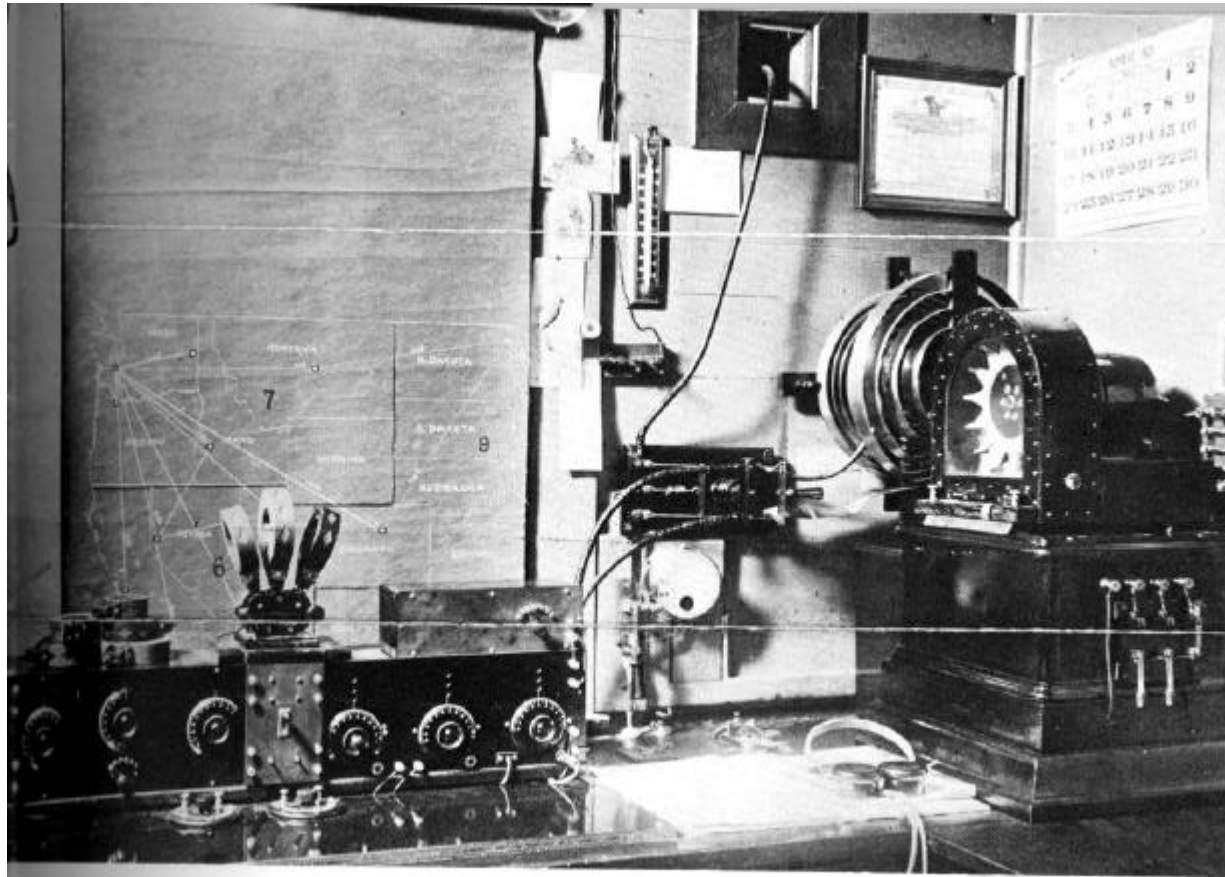
PUGET SOUND RADIO HISTORY

A Personal View

JB Hatfield JR

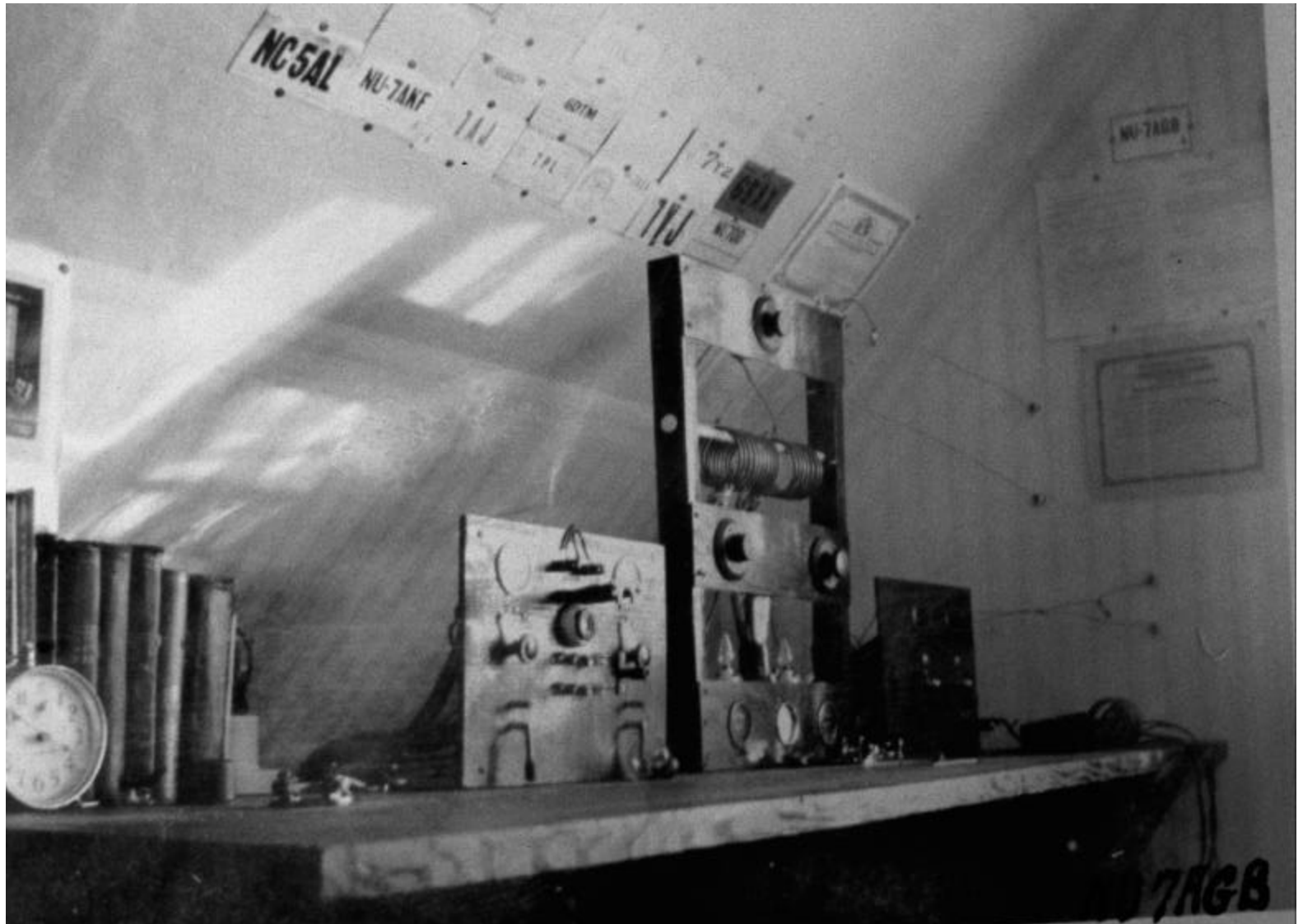
Father Ruth's original "wireless shack" (radio building) on the campus of St. Martin's in 1914.





7YS, an early wireless telegraph station operated by Father Sebastian Ruth at St Martin's College, Lacey, Wash. The map locates stations with which 7YS exchanged Morse code messages.

NU7AGB JBH SR HAM SHACK



The "KGB Radio Four" wowing them from the Tacoma Ledger's station in 1922. The musicians are **Roy Marzano**, "banjoist and leader"; **Roy Beckman**, saxophone; **Anna Luke**, pianist; and **Al Stewart**, drummer. **Al Stenso** (with headphones) is seated at the controls, with unidentified announcer at left.

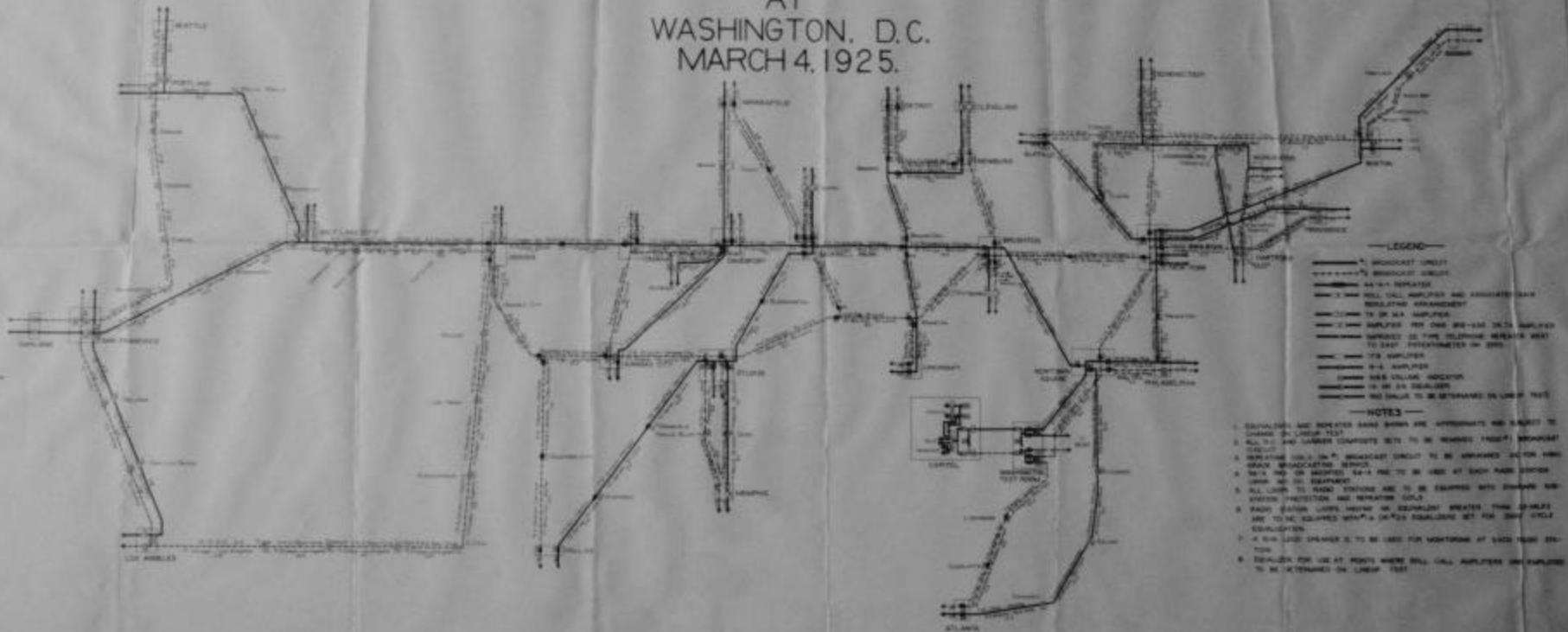
The group's hit number was "Bow-Wow Blues," for which "chief announcer Alvin Stenso furnished the bark."

Note, at left, the musicians' microphone is an ordinary telephone to which a Victrola horn has been attached. Next to it is a telegraph sounder, complete with resonating tobacco can. All radio operators were obliged to listen for and relay distress messages from ships at sea in those days. (Tacoma Public Library)



NETWORK FOR CONNECTING RADIO BROADCASTING STATIONS

LAYOUT FOR BROADCASTING THE PROCEEDINGS OF THE PRESIDENTIAL INAUGURATION AT WASHINGTON, D.C. MARCH 4, 1925.



- LEGEND**
- BROADCAST CIRCUIT
 - BROADCAST CIRCUIT
 - 44-74 REPEATER
 - REL. CILL. AMPLIFIER AND ASSOCIATED CABLE
 - RELAYING ARRANGEMENT
 - 75 OR 50 AMP. AMPLIFIER
 - 2 AMP. AMPLIFIER FOR ONE 500-1000 CTS. SIGNAL
 - AMPLIFIED TO FIVE TELEPHONE HEADSET PAIRS TO 500 FT. PERCENTAGE IN 2000
 - 175 AMP. AMPLIFIER
 - 10-2 AMP. AMPLIFIER
 - 1000 WATT COLLIER. INDICATOR
 - 10 OR 25 SIGNALS
 - NO SIGNAL TO BE DETERMINED ON LINE OF THIS

NOTES

1. EQUIPMENTS AND REPEATER GEAR SHOWN ARE APPROXIMATE AND SUBJECT TO CHANGE BY LATER TEST.
2. ALL 100 AND LARGER CAPACITANCE SETS TO BE REWARDED FIRST PRIORITY TRANSMIT.
3. REPEATER GEAR TO BE BROADCAST CIRCUIT TO BE ARRANGED WITHIN WIRE BROADCASTING SERVICE.
4. SETS AND OR INDICATED 50-100 PAIR TO BE USED AT EACH PAIR STATION.
5. 1000 WATT EQUIPMENT.
6. ALL LINES TO RADIO STATIONS ARE TO BE EQUIPPED WITH SHARED ONE-PORT INDICATOR AND REPEATER GEAR.
7. RADIO STATION EQUIPMENT OR EQUIPMENT GREATER THAN 100 WATT ARE TO BE EQUIPPED WITH A 1000 WATT SIGNALING SET FOR DAY CYCLE EQUIPMENT.
8. A 100 WATT SPEAKER IS TO BE USED FOR NIGHTWORK AT EACH PAIR STATION.
9. EQUIPMENT FOR USE AT POINTS WHERE REL. CILL. AMPLIFIERS ARE EMPLOYED TO BE DETERMINED ON LINEUP TEST.



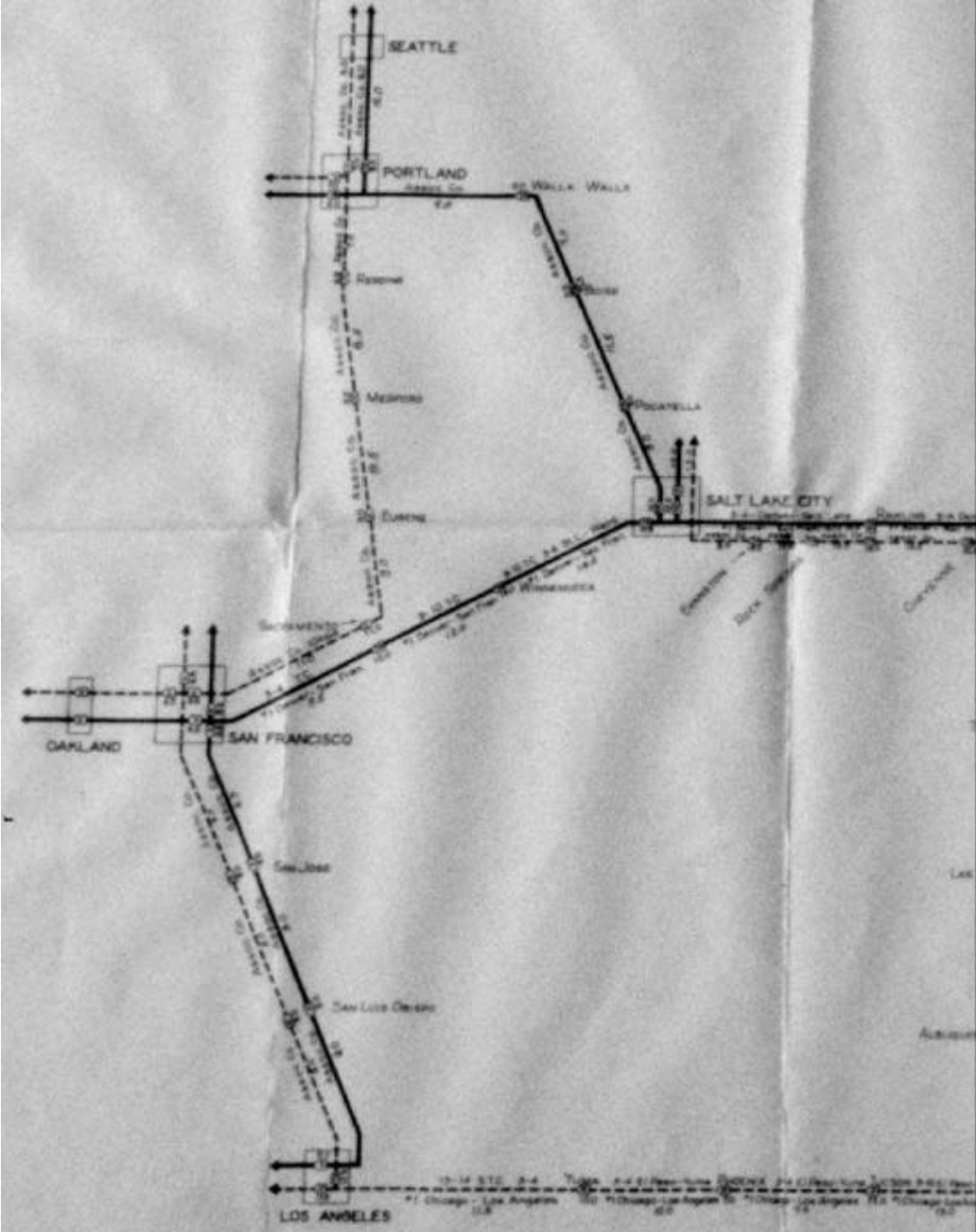
PROVIDENCE

— LEGEND —

- #1 BROADCAST CIRCUIT
- - - - - #2 BROADCAST CIRCUIT
- 44-A-1 REPEATER
- R — R ——— ROLL CALL AMPLIFIER AND ASSOCIATED GAIN REGULATING ARRANGEMENT
- 7A OR 14A AMPLIFIER
- X ——— AMPLIFIER PER DWG 906-436 OR 7A AMPLIFIER
- I ——— IMPROVED 22 TYPE TELEPHONE REPEATER WEST TO EAST POTENTIOMETER ON ZERO
- 17B AMPLIFIER
- 8-A AMPLIFIER
- 518B VOLUME INDICATOR
- 1A OR 2A EQUALIZER
- P ——— PAD (VALUE TO BE DETERMINED ON LINEUP TEST)

— NOTES —

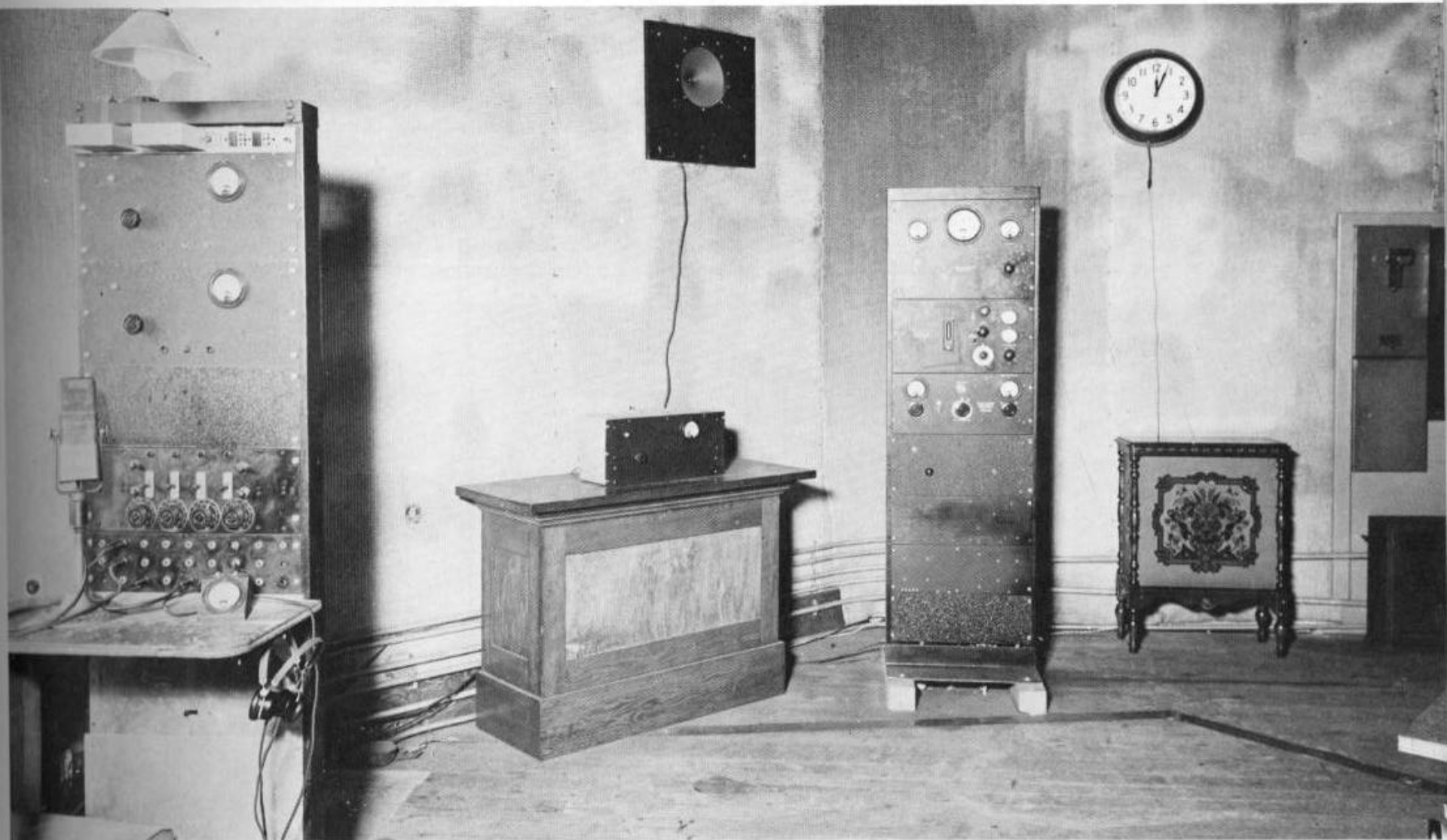
1. EQUIVALENTS AND REPEATER GAINS SHOWN ARE APPROXIMATE AND SUBJECT TO CHANGE ON LINEUP TEST.
2. ALL D.C. AND CARRIER COMPOSITE SETS TO BE REMOVED FROM #1 BROADCAST CIRCUIT.
3. REPEATING COILS ON #1 BROADCAST CIRCUIT TO BE ARRANGED AS FOR HIGH-GRADE BROADCASTING SERVICE.
4. 54-A PAD OR MODIFIED 54-A PAD TO BE USED AT EACH RADIO STATION USING WE CO. EQUIPMENT.
5. ALL LOOPS TO RADIO STATIONS ARE TO BE EQUIPPED WITH STANDARD SUB-STATION PROTECTION AND REPEATING COILS.
6. RADIO STATION LOOPS HAVING AN EQUIVALENT GREATER THAN 30 MILES ARE TO BE EQUIPPED WITH #1A OR #2A EQUALIZERS SET FOR 5000 CYCLE EQUALIZATION.
7. A 10-A LOUD SPEAKER IS TO BE USED FOR MONITORING AT EACH RADIO STATION.
8. EQUALIZER FOR USE AT POINTS WHERE ROLL CALL AMPLIFIERS ARE EMPLOYED TO BE DETERMINED ON LINEUP TEST.





Seattle City Light Superintendent **James Delmage Ross** personally supervised construction of **KTW** for the First Presbyterian Church in 1922. This photo shows Ross (for whom Ross Dam is named) at work in the transmitter room, inside an ornamental dome high above the church roof. By this time (1925) partitions and a ceiling are in place. Earlier, the equipment was simply bolted to such beams and posts as passed through supporting the cupola.

KTW in the 1930s. The operator's "board" with announce mike and controls is in the rack at left. Patch panel connects with an attic studio (actually *below* the transmitter room) and church sanctuary, where the flamboyant Rev. Mark A. Matthews held forth with Sunday sermons.





Announce booth and record playing equipment at **KXA**, around 1931.



KXA transmitter room, Bigelow Building, in the early 30's.



Seattle, Washington

October 7, 1937

Dear Friend:

K

We are pleased to acknowledge your report on the reception

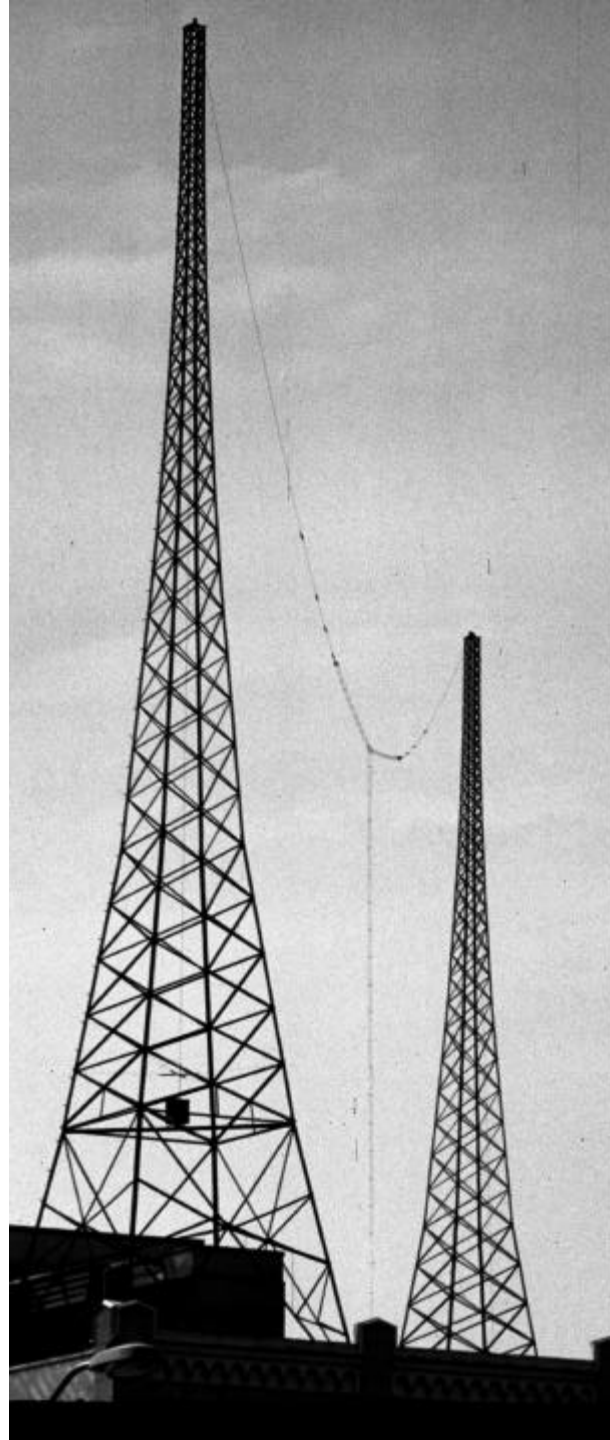
of this station on October 2, 1937 and verify same.

Yours very truly,

AMERICAN RADIO TELEPHONE COMPANY

K X A

A



Now! NBC doubles its Network Program Service in Seattle

KJR of the new Pacific Coast BLUE Network
KOMO of the Pacific Coast RED Network

*All facilities of NBC's great Coast-to-Coast Red and Blue Networks
now available on a full 16-hour service—Increases quality—Affords greater
variety of programs—Makes your radio entertainment finer in every way.*

**NBC BRINGS YOU
THE ROSE BOWL GAME!**

Started in Southern Markets!

Tune in KJR of the Blue Network

*Starting on our Pacific Coast Blue Network
and continuing for more to coast than of its
and programs, NBC starts 1936 off with a bang.*

*For the star description of the facts for the
entire national football championship—rather
than some of the year—will be broadcast over
the NBC Blue Network.*

*The country's most famous sports writers, com-
mentators and announcers will bring the game to
NBC listeners in real, step-by-step reports.
Follow the ball with NBC!*

RADIO listeners and advertisers of the
entire Seattle area can now tune in
their favorite local stations with the cer-
tainty of an even wider selection of the
finest programs on the air.

Effective January 1st, 1936, through its
two stations associated with the National
Broadcasting Company, Seattle's radio
service and enjoyment will be doubled.
These splendid stations insure your get-

ting the last word in service, reception,
programs. Every resource of the National
Broadcasting Company is in actual opera-
tion, *doubled* by the linking up of these
famous networks, Coast-to-Coast.

TUNE IN—HEAR FOR YOURSELF!

KJR of the Pacific Coast Blue Network
KOMO of the Pacific Coast Red Network

Watch your local newspaper for hours of the NBC Feature Programs

NATIONAL BROADCASTING CO., INC.

A RADIO CORPORATION OF AMERICA—SUBSIDIARY • NEW YORK • CHICAGO • SAN FRANCISCO



(University of Washington)

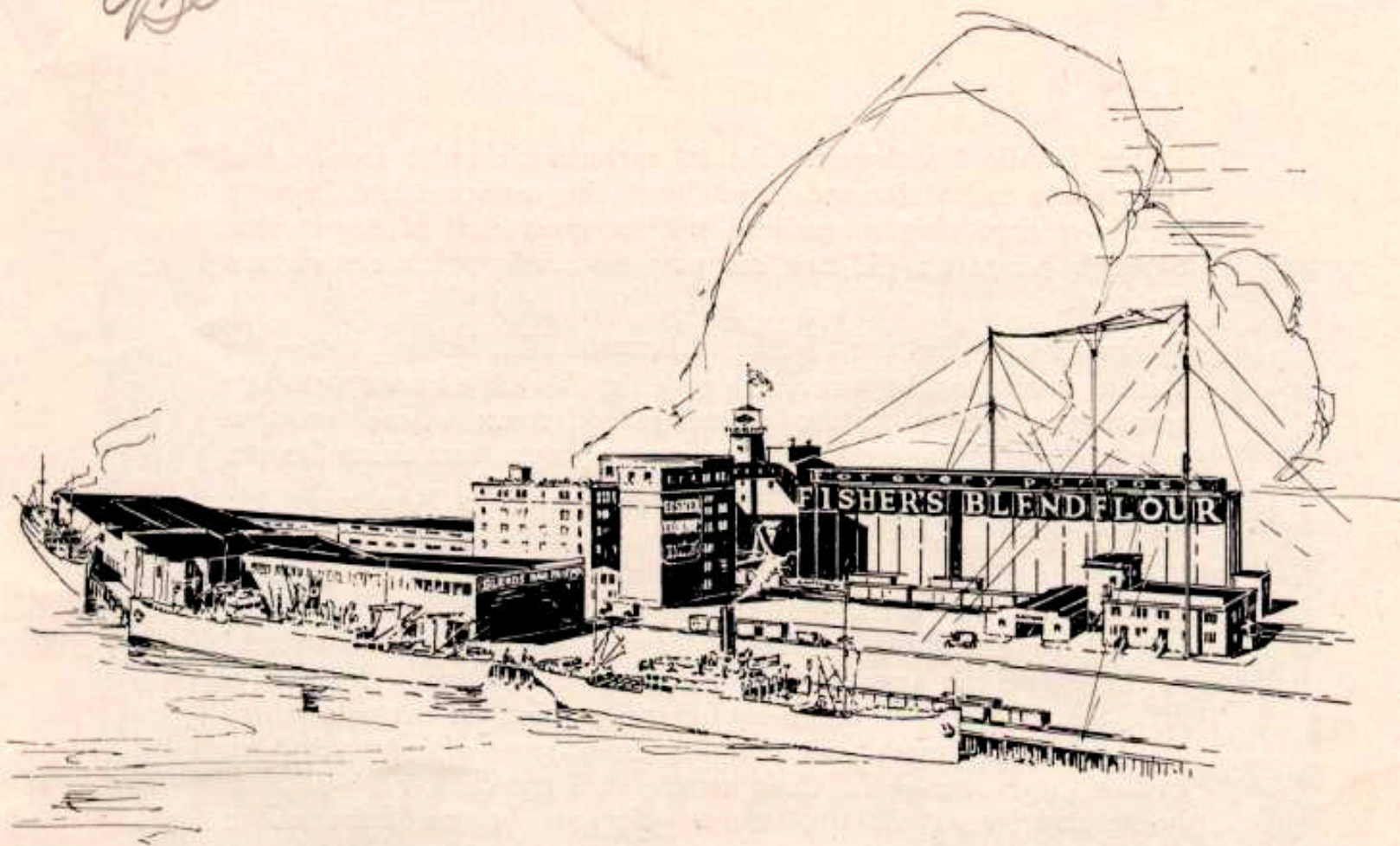
Chet Huntley, future TV newsman, was a poorly paid announcer for **KPCB**, Seattle, in 1934. Here he produces a one-man low-budget "opera broadcast" using phonograph albums, sound effect records of applause and the orchestra's tuning up, and his own commentary.

t
v
c
I
v
E
c
t
n
a
j
S
i
u
Y
S
W
W
W
t



"Aunt Vivian" (**Elise Olmstead**) broadcasting one of her famous bedtime stories for children. Legend maintains the tales actually were code messages for her husband's far-flung network of rum-runners.

Beck



K O M O



SCENES AT K O M O POST-INTELLIGENCER STUDIO

Members of the Post-Intelligencer staff before the microphone in K O M O's special studio in the P.-I. Building.

Upper left: Prudence Penny (Bernice Redington) telling the fair listeners "What to Prepare for Dinner"

Upper right: Sunshine (Doc Wilson) and Sparky (Don Milligan) collecting over K O M O for the annual P.-I. Christmas Cheer Fund.

Right center: Walter Rue, radio editor of the P.-I., giving some hot news just off the wire.

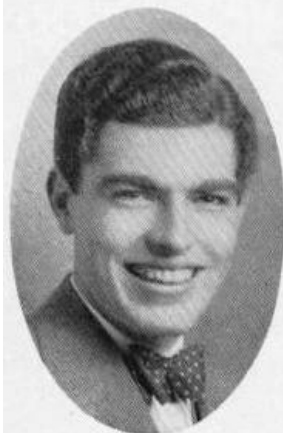
Lower left: Art Chamberlin telling about the day's ball game.

Lower right: Willard Coghlin giving the P.-I. late news flashes.



WEST COAST THEATRE FOLKS

Every Friday night a large crowd of theatre folks—musicians, comedians, singers and other entertainers—gather in K O M O's special studio "back stage" at the Fifth Avenue theatre for the weekly West Coast Theatres' radio frolic. Seated at the piano is Hermie King, master of ceremonies, and in front of him, seated on the floor, Jim Clemmer, manager of the Fifth Avenue Theatre.



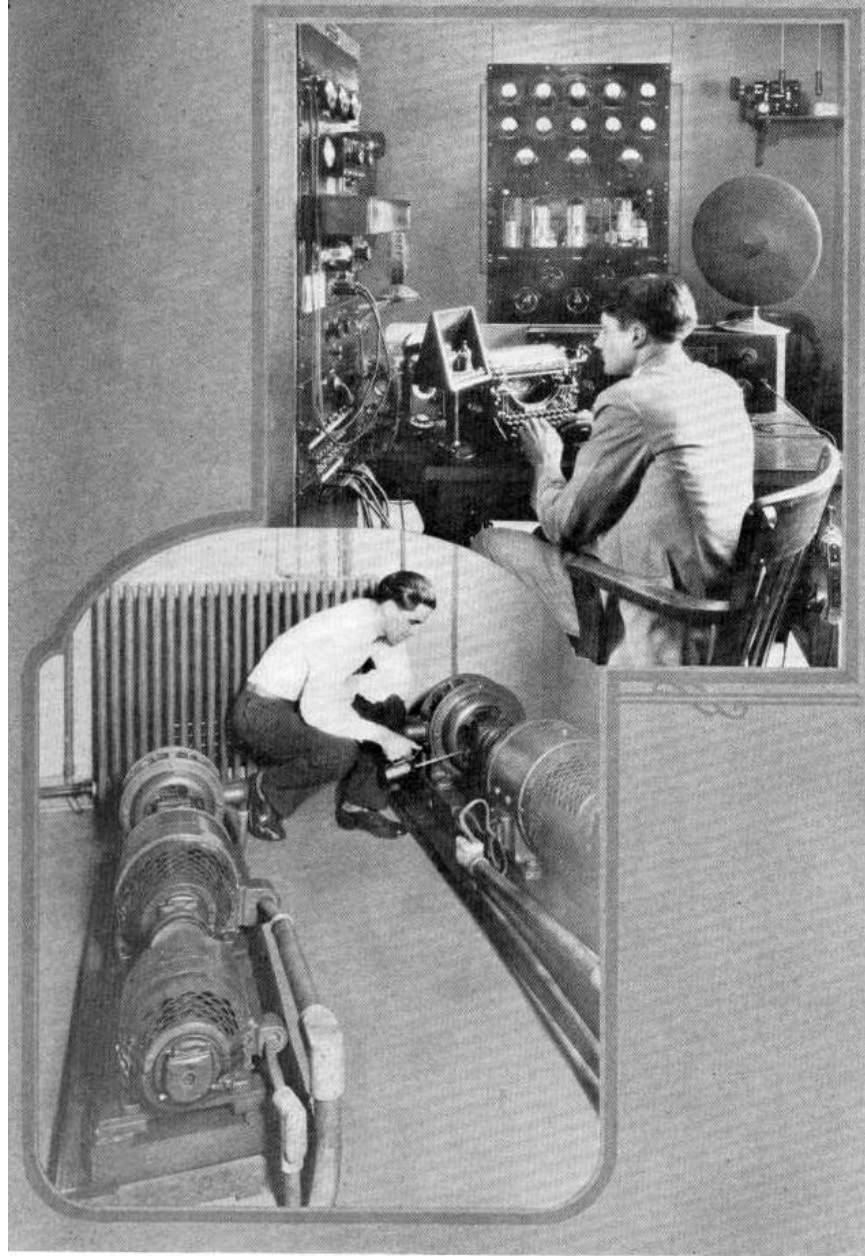
*Joe Roberts
West Coast Theatres,
Announcer*



TECHNICAL STAFF—REMOTE CONTROL TRUCK

Upper: K O M O's technical staff. Left to right—Tom Rewak, F. J. Brott, chief engineer; Earl Irvine, J. A. Johnson, F. B. Mossman, R. B. Smith, Robert Flagler.

Lower: When local programs originate outside of K O M O's studios, the remote control truck is used.



SCENES AT K O M O's TRANSMITTER

Upper: An operator on duty at K O M O's transmitter plant is required to watch the frequency, power and modulation of his station and in addition maintain a constant watch for distress signals from ships at sea and telegraphic communication with the National Broadcasting Company operators.

Lower: 4,000-volt power plant supplying K O M O's power.





150 WEEKS ON KOMO-KTCL

Warren Anderson's Radio Orchestra claims the record of the longest run of any radio orchestra in the West, if not in the entire country. Starting shortly after K O M O's predecessor, K T C L, was licensed, this orchestra has broadcast every evening for nearly three years. April 6, 1928, marked its 150th consecutive appearance over K O M O and its predecessor, K T C L. Left to right, standing: Warren Anderson, director; Jack Wollenschlager, trumpet; Bill Merrieweather, trombone; C. P. Puck, bass. Seated: Helene Hill, pianist; Richard Cook, banjo; Orland Ogden, alto saxophone; Lowell Pershall, tenor saxophone.



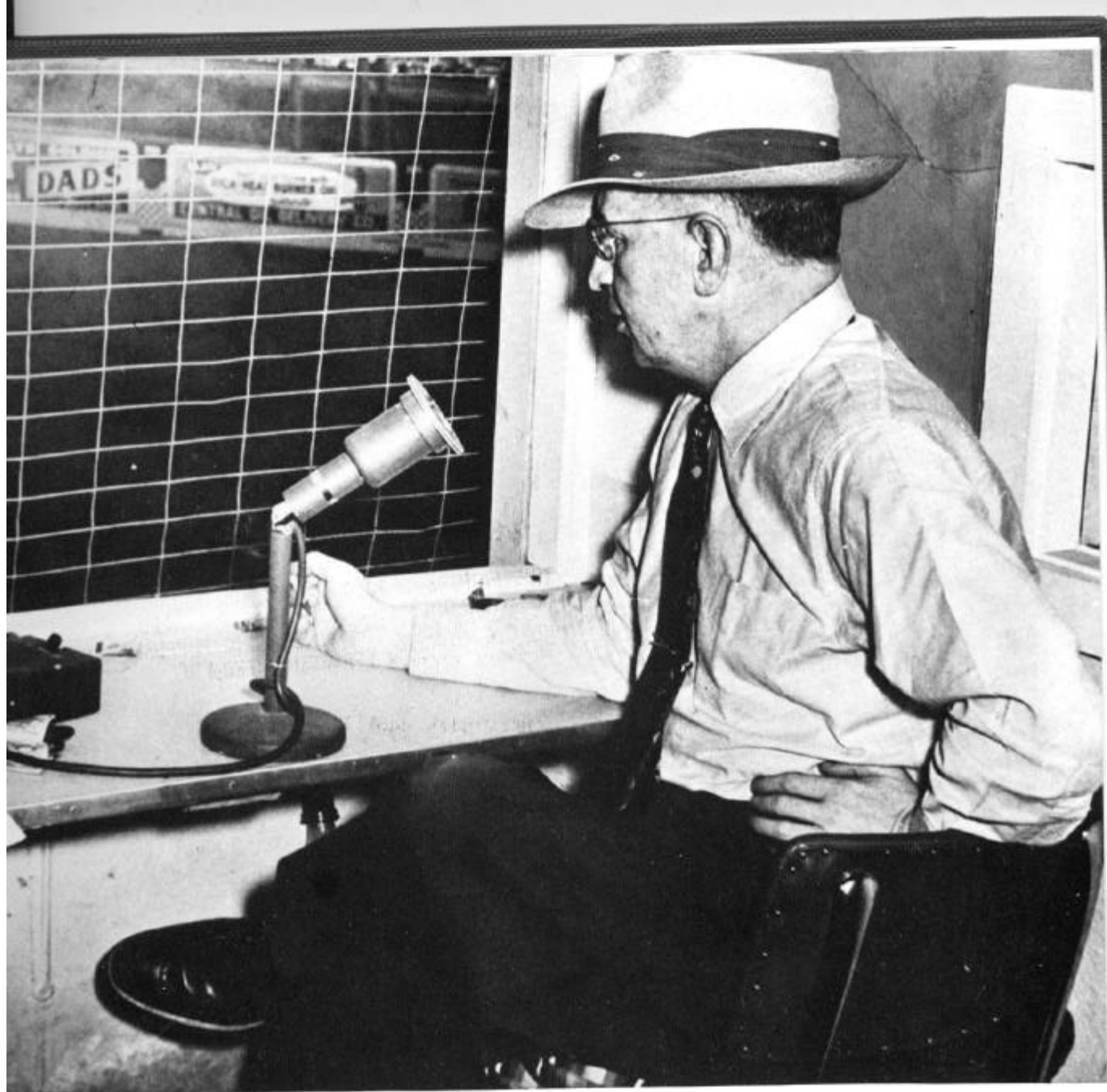
MRS. WILLOCK—A. E. DOME—JOHN HESSEMER

The largest physical culture class in the Pacific Northwest is K O M O's radio class, which gathers each week-day morning in numerous homes and schoolhouses for exercises conducted by the Seattle Y. M. C. A. in co-operation with Totem Broadcasters. Left to right: Mrs. Willock, A. E. Dome and John Hessemer.





(Seattle Historical Society)
Studio "B," one of four deluxe studios built for **KOMO-KJR**'s combined operation on the seventh floor of the Skinner Building in Seattle, July, 1933. The construction was something marvelous. Floors floated on six inches of balsam wool. Walls, doors and ceilings were double; and glue, rather than nails, held things together. It was one of the finest broadcast installations in the world.



Leo Lassen broadcasting from the radio booth of Sick's Stadium in 1951. (Seattle Times photo by Don Duncan.)

FRANK McINTOSH & JBH SR

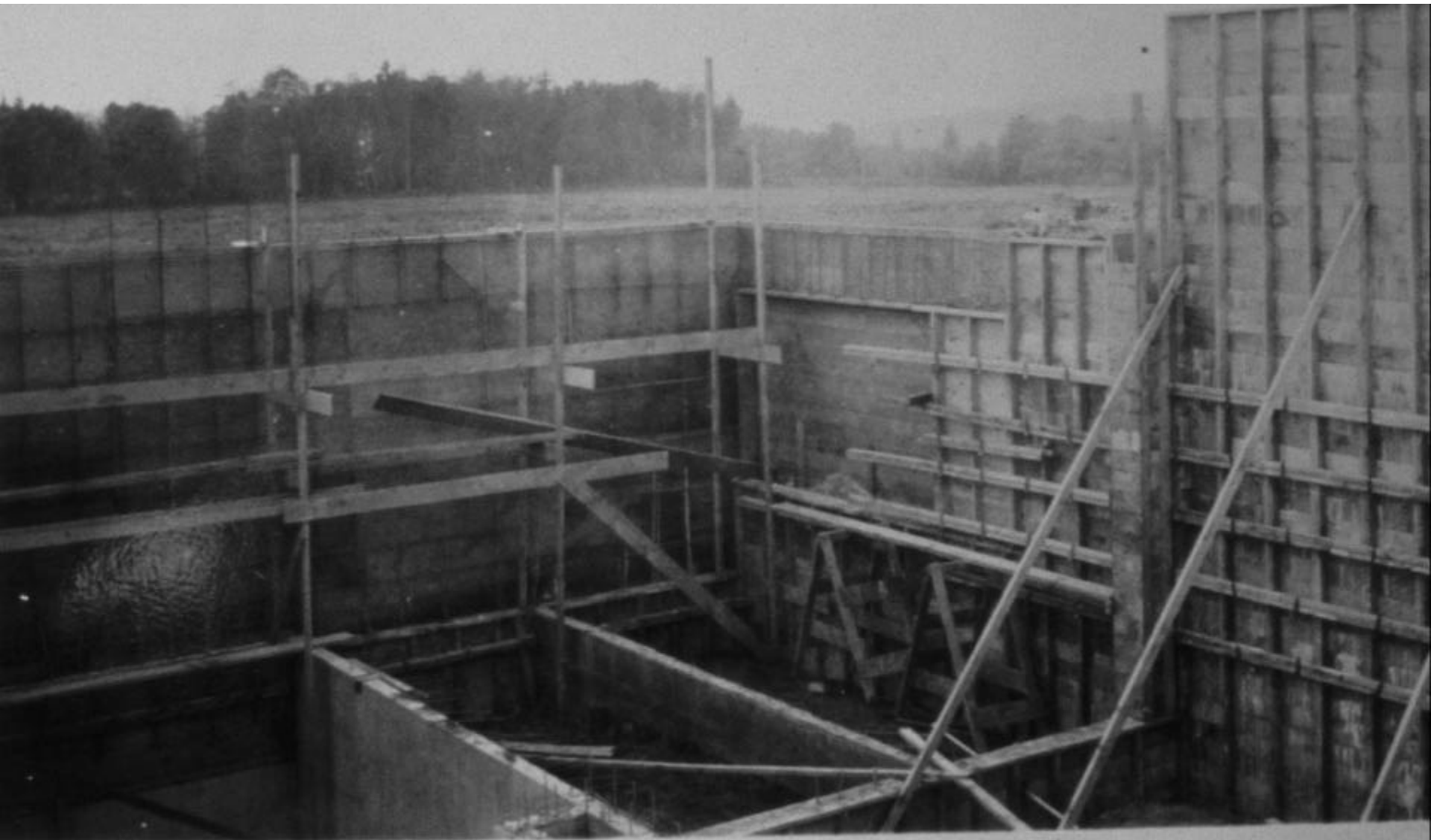


McINTOSH AT TWIN LAKES



BUD RAY







Dec 15-40







BILL REUTER & W.E. 50 KW





KIRO









John H. Dubuque, chief engineer and popular announcer at **KXA**, Seattle in 1947. He's shown here at the control board of KXA's Bigelow Building studio, reading a "spot" announcement and preparing simultaneously to cue up a sound effect record on the near turntable.















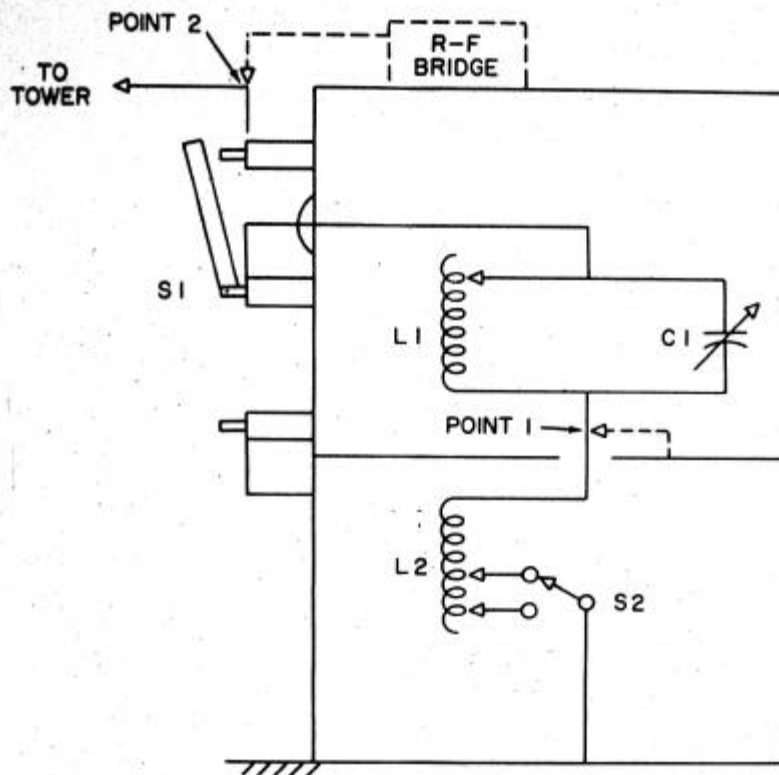






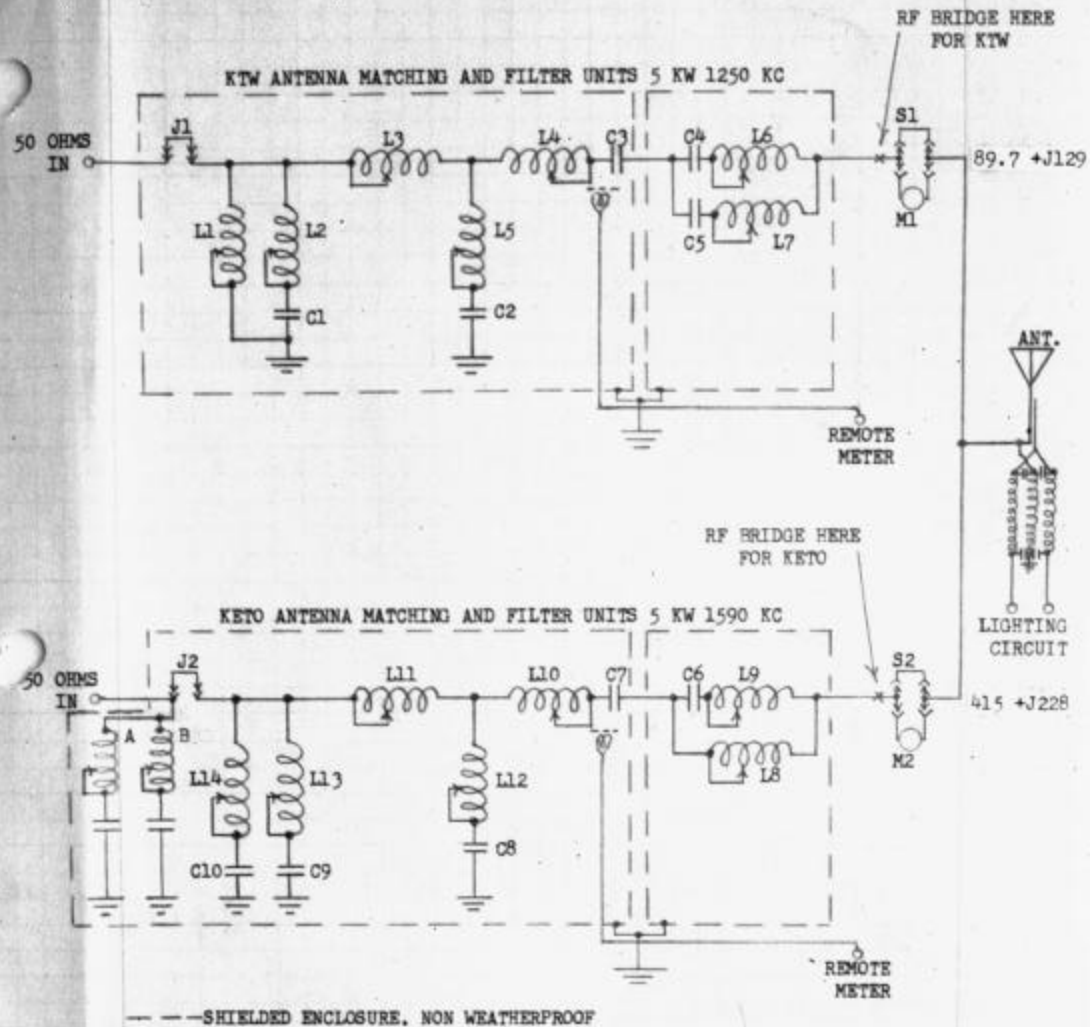
The original Channel 5 crew hamming it up in **KING-TV's** studio on Second Avenue West. From left: **Stan Carlson, Clare Hanawalt (on ladder), Mique Talcott, Paul Sawin, Al Miller, Dave Crockett, Tom Priebe, Tom Dargan, and Tom Rogstad.**

KING - KIRO FILTER



- S 1 DISCONNECT SWITCH
- S 2 R-F CONTACTOR (IF REQUIRED)
- L 1 - C 1 710 KC ISOLATION CIRCUIT
- L 2 1090 KC DETUNE INDUCTOR

ANTENNA DIAGRAM



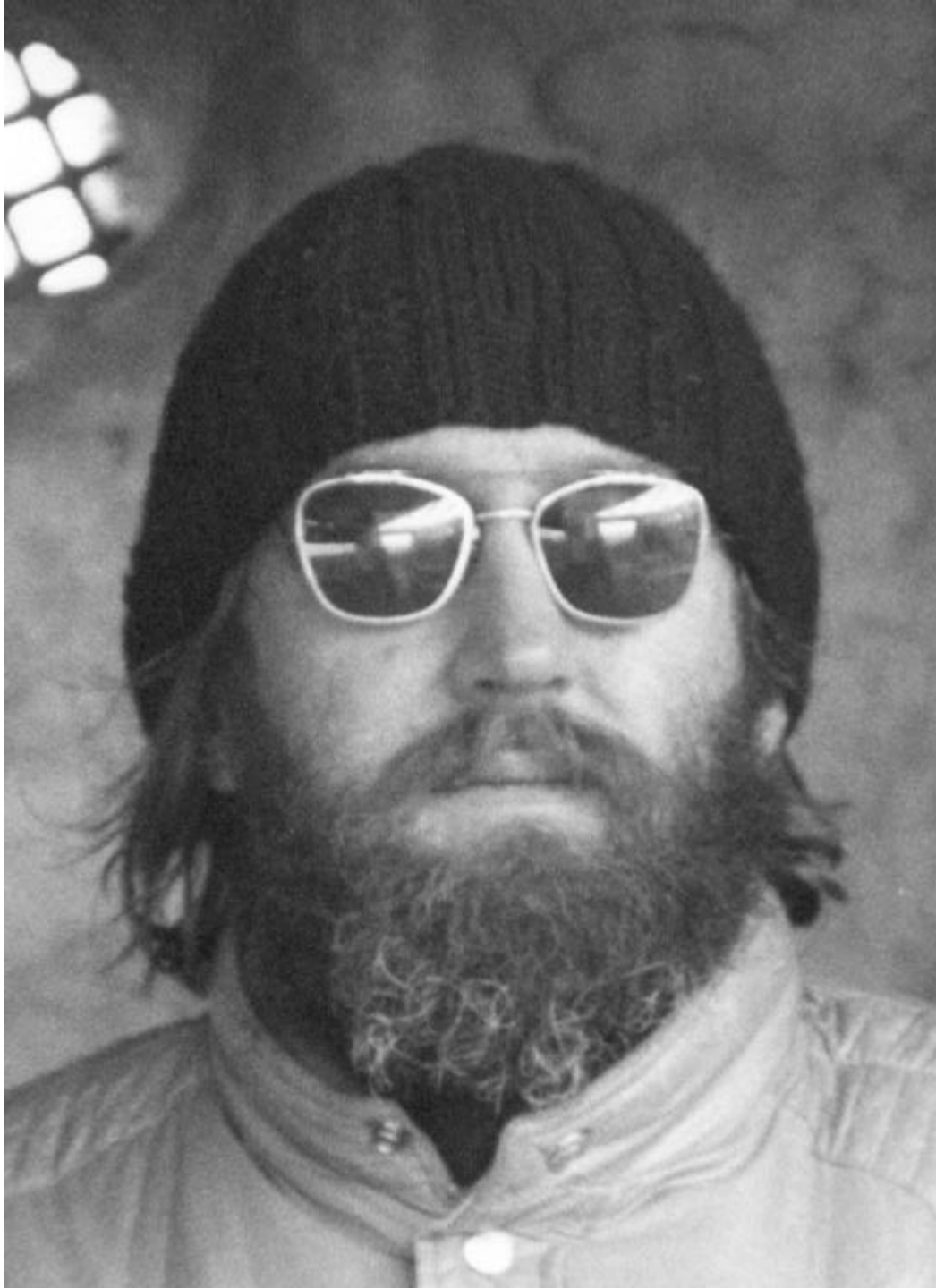
NOTE: A 2ND HARMONIC FILTER, 3180 K.C.
 B KBLE, 1050 K.C. FILTER

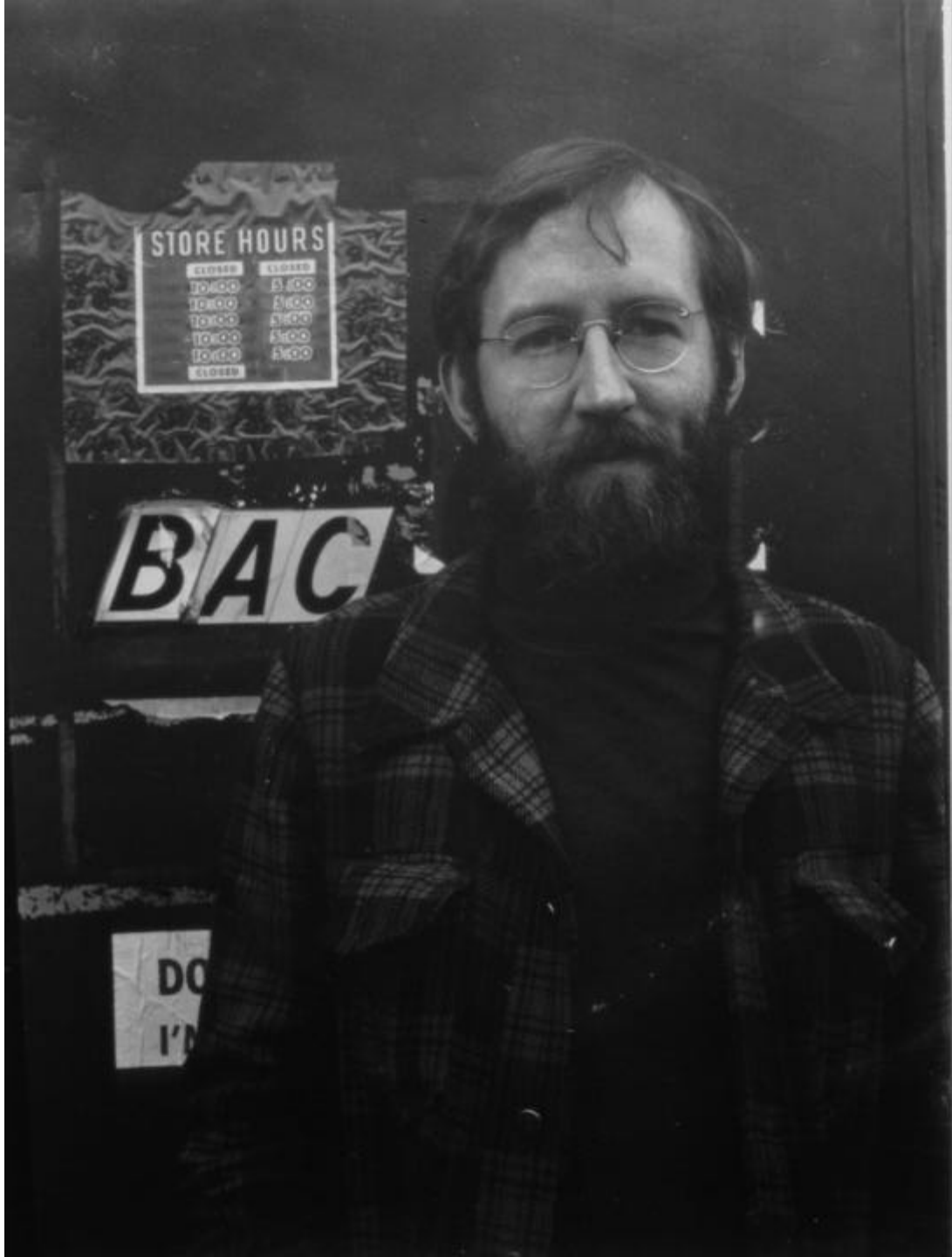
EQUIPMENT FOR COMMON ANTENNA OPERATION BY KETO AND KTW

ANTENNA ALSO SUPPORTS KTW-FM ANTENNA

DECEMBER 1964







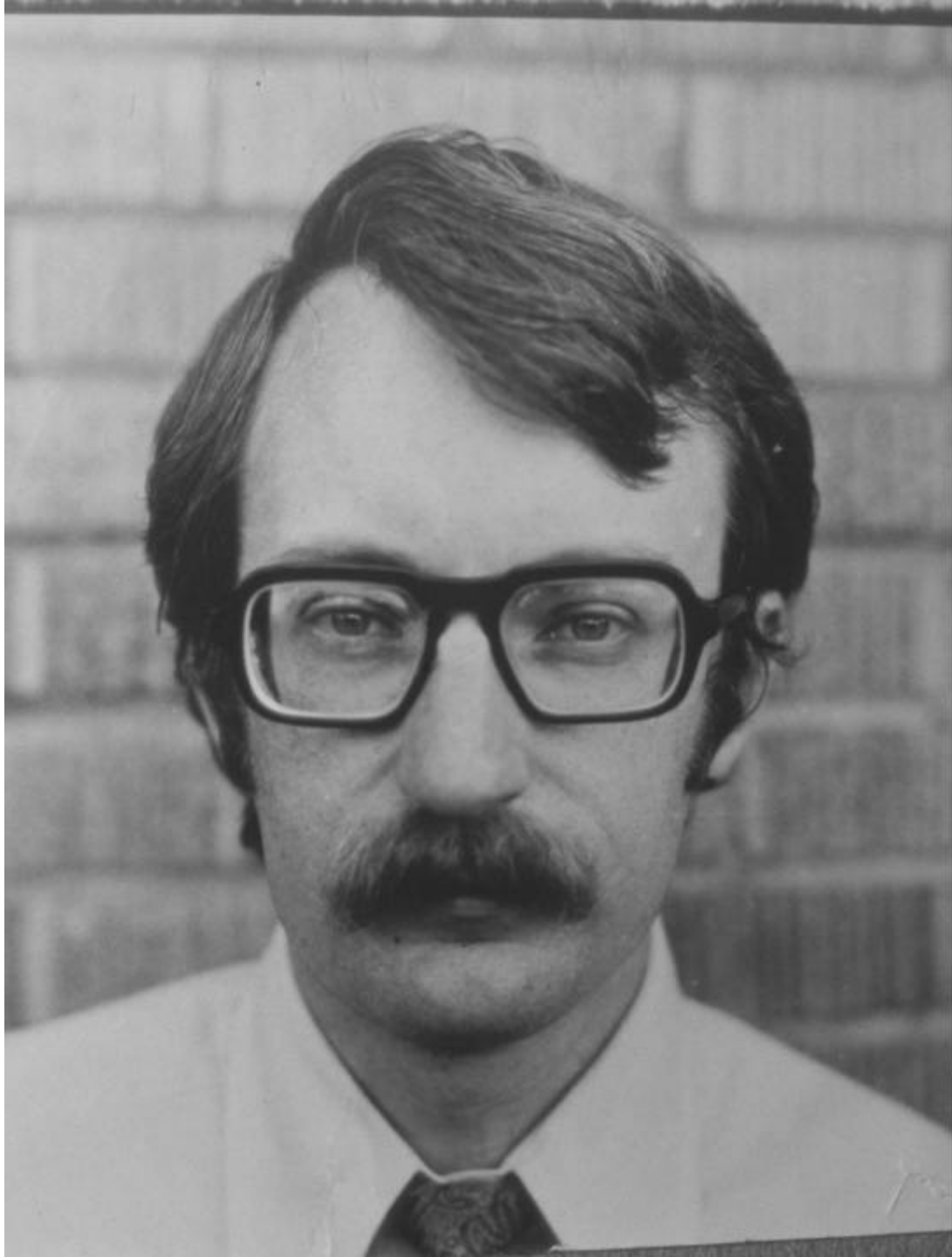
STORE HOURS

CLOSED	OPEN
10:00	5:00
10:00	5:00
10:00	5:00
10:00	5:00
10:00	5:00
10:00	5:00
CLOSED	

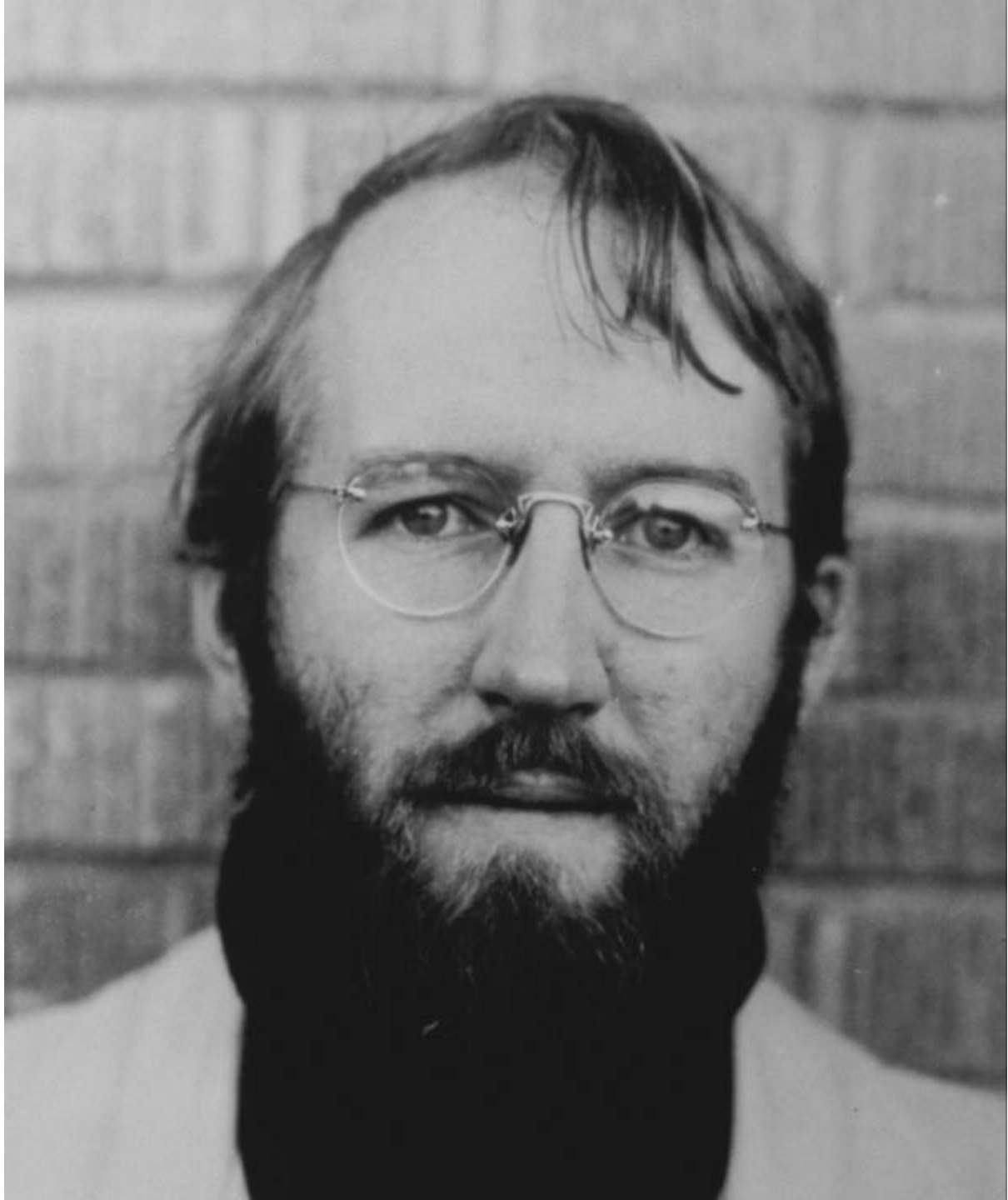
BAC

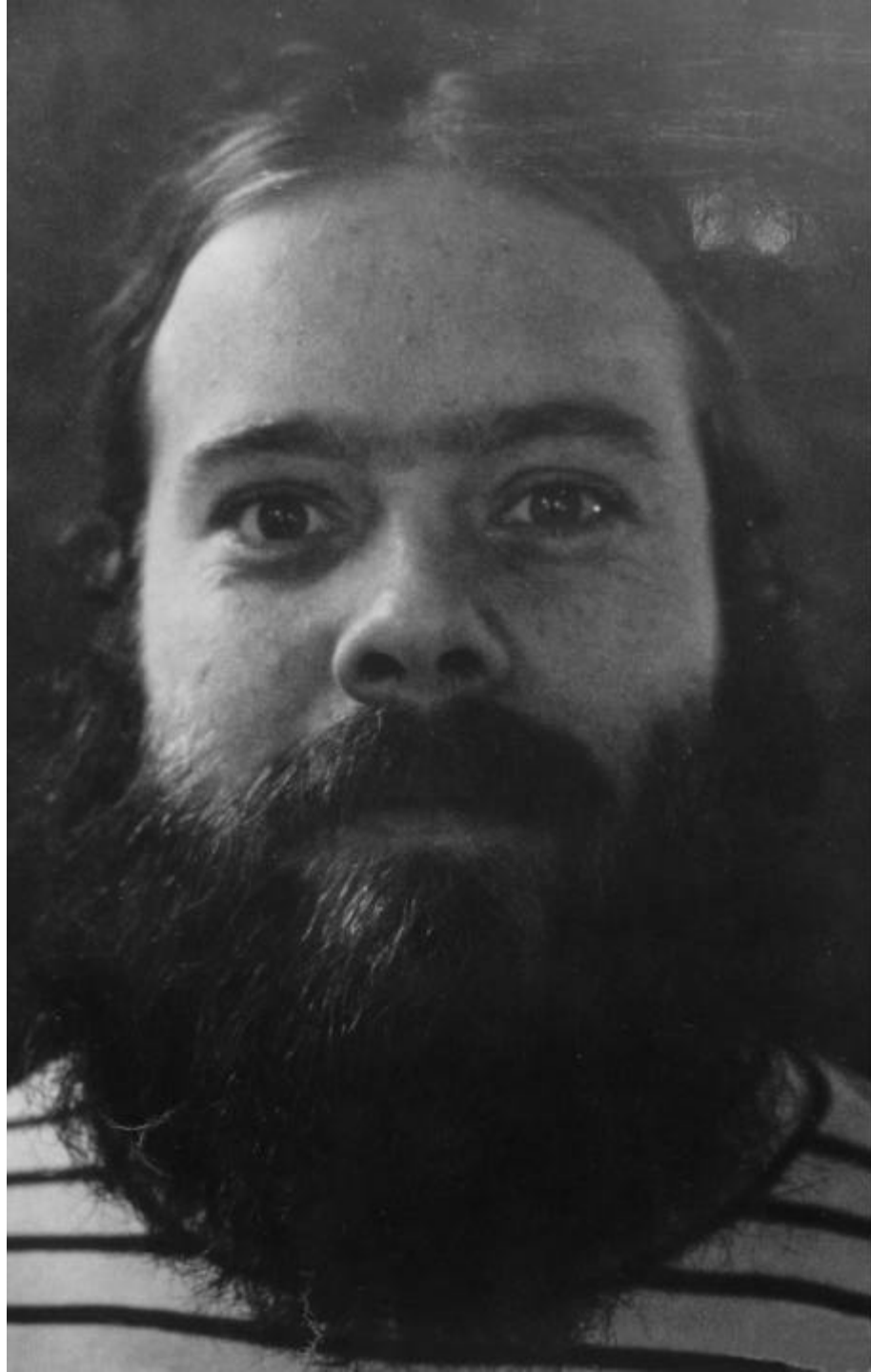
DO
I'D







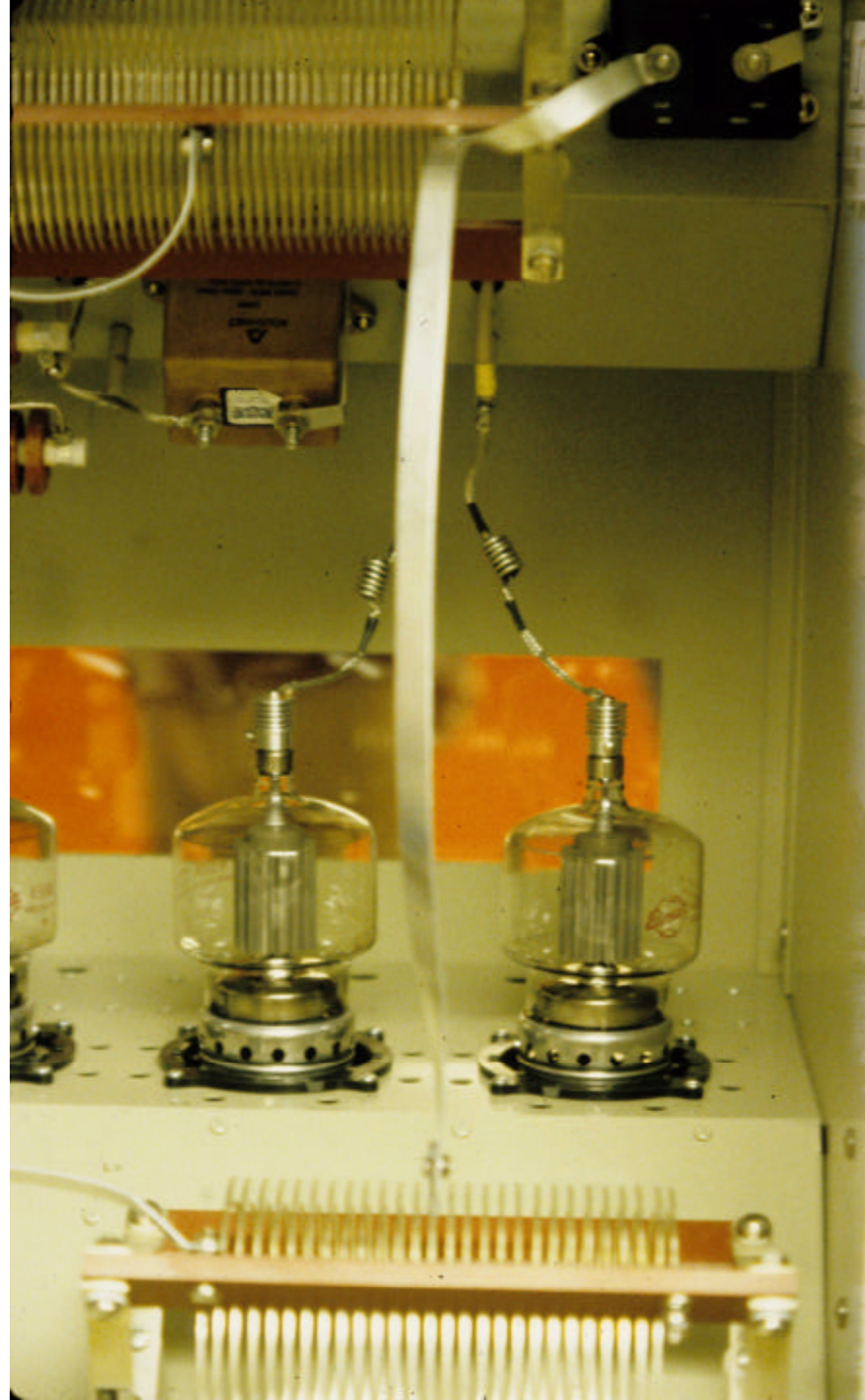


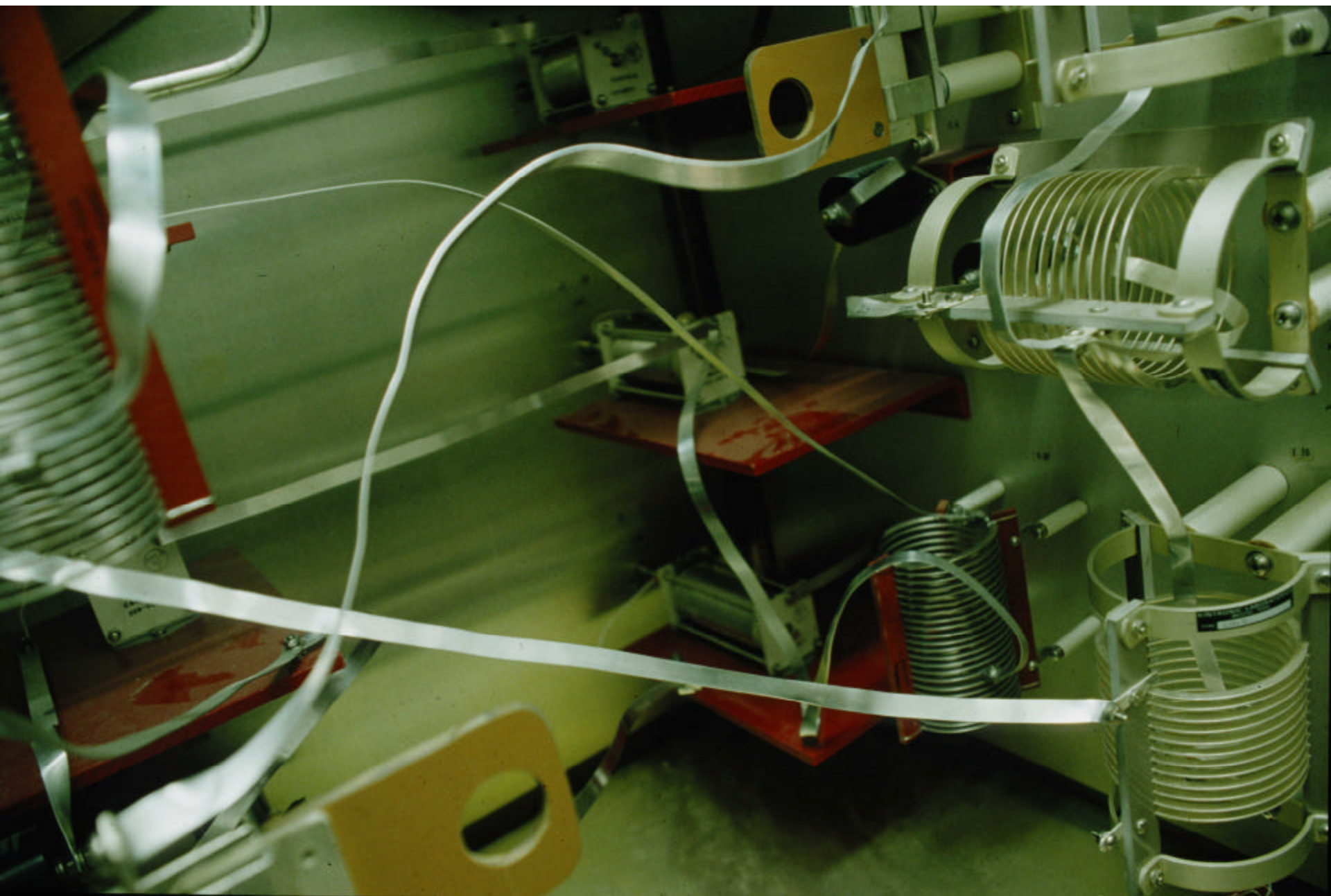


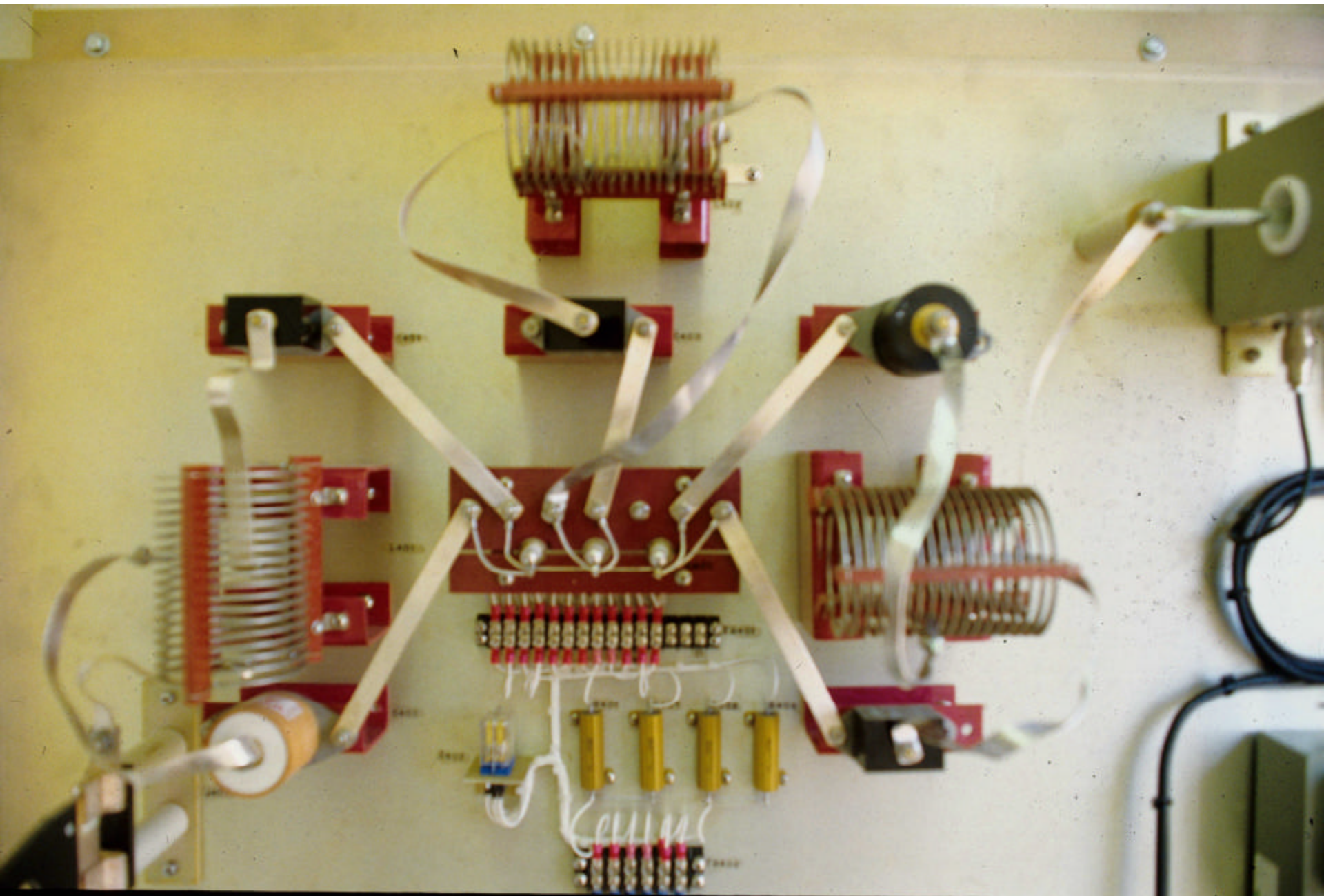












URSA MAJOR PLASTIC INSULATOR
BOTH HALVES



